

**Five standard seal types**



**Snap-on seals**

Placed over the overlapping strap ends either during or after tensioning the strapping. Eliminates pre-threading. Speeds the strapping operation.



**Thread-on seals**

Must be threaded over the overlapping strap ends before the tensioning tool is applied. Generally used on bales, bundles and the larger strap sizes.



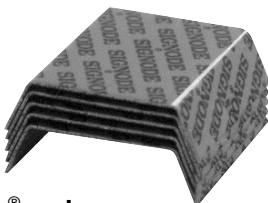
**Open-flange seals**

Heavy-duty version of the snap-on. Requires no pre-threading.



**Push-type seals**

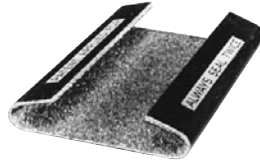
Used where strap is tensioned by butting the nose of the tensioner against the seal. Overlapping flanges withstand the higher stress.



**Nestack® seals**

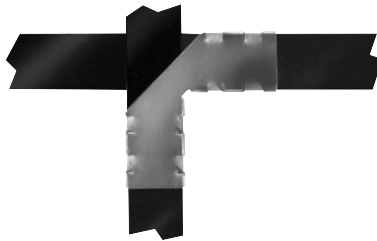
Held together by interlocking nibs. This Signode development permits loading partial stacks into magazines of seal feed combination tools and power strapping machines.

**Special purpose seals**



**Microgrip® seals**

For severe impact applications using waxed strapping. Microgrip seals are coated inside with a high-friction grit which bites through the wax to provide maximum holding power.



**Intersection seals**

Two of these seals located at the top and bottom of the load keep straps at right angles and preclude side shift. Available for 1-1/4" (31.8mm) strapping.

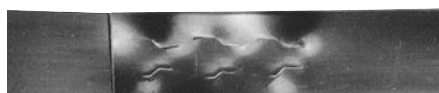


**Signature seals**

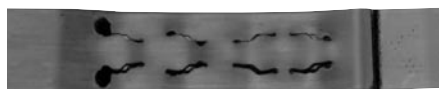
Permits you to identify your shipments and display your name or trademark on every package. Or speed handling by coding your products according to size, type, units, etc. Signode includes free design service with these seals.

**Sealless joint**

Sealless joints can be made with Signode manual or pneumatic combination tools. Using interlocking keys, the sealless joints provide static joint strength equal to that of notch-type joints. The reverse lock sealless joint features one reversed interlocking key for added security in impact conditions.



Three key sealless joint



Four key, reverse lock, sealless joint

**Basic seal joint types**

Down notch joint



PACKAGE SURFACE

Reverse notch joint



**Notch joints**

Notch joints mechanically lock strapping ends together. The sealer cuts through the seal and strapping to form one or two sets of tabs. The tabs are pushed down (down notch joint) or up (reverse notch joint). Notch joints are typically used on waxed strapping in packaging and unitizing applications.



Crimp joint



PACKAGE SURFACE

Another way to seal the ends of strapping is to press, or "crimp" undulations into the seal and strapping ends. The strength of the crimp joint comes from the deformed seal creating high frictional forces. Crimp joints produce high static and dynamic joint strengths and are used on applications like carloading, where the strapped load is subject to severe impact.

## For steel strapping

Seal Name	Strap Size		Part Number	Seal Type	Joint Type	Tool Name	Seal Length		Standard package	Approximate Shipping Weight	
	inch	mm					inch	mm		lbs	kg
38 AL	3/8	9.5	000555	Nestack	Double Notch	AL-38	.860	21.8	14,400	39	18
38 C			000450	Snap-on		C-3820	1.120	28.5	5,000	28	13
38 SPC			000453	Push	Single Notch	SRC-3820	1.047	26.6	5,000	38	17
12 AL	1/2	12.7	000554	Nestack	Double Notch	AL-12	.860	21.8	10,500	33	15
12 AMP			000512	Nestack		AM-12, AMP-1-12	1.120	28.5	6,000	46	21
12 C			000500	Snap-on	Double Notch	C-1223, YC-1223	1.120	28.5	6,000	44	20
12 SPC			000503	Push	Single Reverse Notch	PNSC-2-12, SRC-1223	1.047	26.6	3,000	30	14
58/34 AMP	5/8	15.9	000567	Nestack	Double Notch	AM-58, AM-34, AMP-1-58, AMP-1-34	1.120	28.5	5,000	50	23
58 C			000550	Snap-on		C-5823, YC-5823	1.250	31.8	4,800	45	20
58 SPC			000553	Push	Single Notch	PNSC-2-58, SRC-5823	1.047	26.6	5,000	58	26
34 C	3/4	19.0	000600	Snap-on	Double Notch	C-3423, YC-1-3425	1.250	31.8	5,000	55	25
34 HCOF			005256	Open-flange		SYC-3431	2.200	55.9	1,500	50	23
34 HOC			005271	Push	PRHM-34, PRHR-34, RCD-3431, RCNS2-34, SYC-3431	2.200	55.9	700	31	14	
34 MNT			007255	Nestack	Double Notch	AHP-34	1.500	38.1	2,800	53	24
34 PNSC			000572	Push	Single Notch	PNSC-2-34, SRC-3423	1.047	26.6	4,000	54	25
34 SHOC			005273	Push	Single Notch	RCNS2-34, SYC-3431	1.500	38.1	1,200	32	15
104 DG*	1-1/4	31.8	007200	Thread-on	Four Crimp	B-1431, B-1450, NSP-1435	4.750	120.7	500	53	24
107 DG*			000575	Thread-on	Double Crimp	B-1431, B-1450, NSP-1435	2.937	74.6	700	46	21
107 DG OF*			000580	Open-flange		B-1431, B-1450, NSP-1435	2.937	74.6	500	33	15
114 A	1-1/4	31.8	000612	Nestack	Double Notch	AH-114, AHP-2-114	1.500	38.1	1,350	39	18
114 OF			008796	Open-flange	Double Notch	C-1431, C-1450, RC-1435-50, RCD-1431, RCNS2-114	2.200	55.9	1,000	50	23
114 P			005269	Push	Double Notch	C-1431, C-1450, PRHR-114, RC-1435-50, RCD-1431, RCNS2-114	2.200	55.9	700	46	21
114 TO			005267	Thread-on	Double Notch	RCNS2-114	2.200	55.9	1,000	50	23
117 HDG OF*	1-1/4	31.8	000585	Open-flange	Double Crimp	B-1450, N-1444-50LSH, N-1457-LSH-2A	2.937	74.6	500	41	19
117 HDG TO*			0X4308	Thread-on	Double Crimp	B-1450, N-1444-50LSH	2.937	74.6	500	41	19
208 DG*	2	50.8	000588	Thread-on	Double Crimp	B-250, NS-250-65L	2.937	74.6	300	43	20
208 TO	2	50.8	001871	Thread-on	Double Crimp	B-250, NS-250-65L	2.937	74.6	300	43	20

### Power Strapping Machine (PSM) seals

38 MNA	3/8	9.5	000562	Nestack	Single Notch	—	.750	19.0	10,200	35	16
38 MN MNS	3/8	9.5	000462	Nestack	Single Notch	—	.680	17.2	10,200	31	14
12 MNA	1/2	12.7	000563	Nestack	Single Notch	—	.750	19.0	6,000	31	14
12 MN MNS	1/2	12.7	000515	Nestack	Single Notch	—	.680	17.2	10,500	40	18
58 MB	5/8	15.9	000435	Nestack	Double Notch	—	.984	24.9	5,000	45	21
58 MN	5/8	15.9	008996	Nestack	Single Notch	—	.680	17.2	9,450	35	16
58 MNA	5/8	15.9	000565	Nestack	Single Notch	—	.750	19.0	4,800	30	14
34 MB	3/4	19.0	000569	Nestack	Double Notch	—	.984	24.9	3,000	42	19
34 MNK	3/4	19.0	000566	Nestack	Single Notch	—	.750	19.0	4,200	47	21
34 MNT	3/4	19.0	007255	Nestack	Triple Notch	—	1.500	38.1	2,800	53	24
114 M	1-1/4	31.8	000561	Nestack	Double Notch	—	2.000	50.8	750	45	21

\* All seals designated as "DG" have an aluminum oxide grit glued to the inner face. Grit seals are used in crimp joint systems in conjunction with lubricated strapping to provide a source of friction.